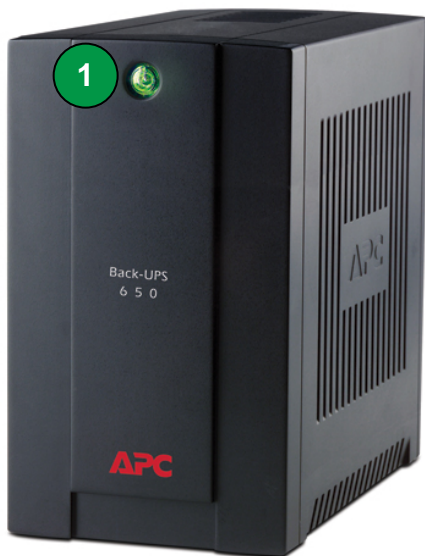


# APC Back-UPS<sup>®</sup> 650

## Battery Backup with Surge Protection for Electronics and Computers

APC's Back-UPS 650 provides enough battery backup power to allow you to work through short length power outages. It also safeguards your equipment against damaging surges and spikes that travel along utility and phone lines. Specifically designed for areas with rugged power conditions, the Back-UPS 650 features Automatic Voltage Regulation (AVR), which instantly adjusts high and low voltages to safe levels for your electronics, so you can work indefinitely during brownouts and overvoltages. Coupled with all the other standard features of the Back-UPS series, the 650 is the perfect unit to protect your productivity from the constant threat of bad power and lost data.

## Product Features:



**1** **Combination Power/LED Status Indicator and Audible Alarms** give status of UPS functions and power

**2** **Automatic Voltage Regulation (AVR)** - "Double Boost" and "Single Trim" AVR instantly corrects voltage fluctuations so you can work indefinitely through deep brownouts and overvoltages without draining the battery, saving battery life for power outages.

**3** **3 "Battery Backup & Surge Protected" Outlets** keep a CPU, monitor and other critical devices running when the power goes out or fluctuates outside safe levels.

**4** **PowerChute Software** lets you use your computer to access additional power protection and management features:

- Preserves your work, shuts down system during outages
- Restarts your system, minimizing work disruptions
- Enables customization of your Back-UPS settings
- Monitors and displays power and battery status

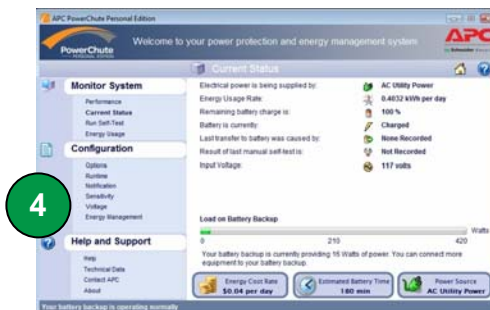
**5** **Data Line Surge Protection** guards against surges and spikes traveling over an analog phone line.

**6** **Push Button Circuit Breaker** enables quick recovery from overload.

**7** **Automatic Diagnostic Testing** ensures your unit is ready when you need it.

**8** **2 Yr Warranty**, free technical phone and online support.

**9** **Easy to use "one step" battery connector.**



## Back-UPS 650 Specifications

Model Number	BX650CI-ZA
<b>Output</b>	
Output Capacity	650 VA / 390 Watts
Output Voltage / Frequency (On utility)	230V / 45-65 Hz
Output Voltage / Frequency (On battery)	230V +/-8%, 50 or 60 Hz +/-1 Hz (auto-sensing)
Output Connections	3 South African outlets (BS 546) (all with battery backup and surge protection)
Waveform Type	Stepped Approximation to Sine Wave
<b>Input</b>	
Input Voltage / Frequency	230V / 45-65 Hz
Input Connection	1.2 m. long hardwired power cord with South African plug
<b>Surge Protection</b>	
AC Power Surge Protection	All outlets
Data Line Surge Protection	Analog phone line, RJ-11 (single line, 2-wire). For phone, fax, modem, DSL. (Phone cable not included).
<b>Physical</b>	
Unit Dimensions (H x W x D)	200 x 115 x 257 mm
Unit Weight	6.20 Kg
Shipping Dimensions (H x W x D)	270 x 198 x 340 mm
Shipping Weight	6.5 Kg
Color	Black
UPC Code	731304285151
<b>Battery</b>	
Battery Type	Maintenance-free, sealed lead-acid battery, leakproof
Battery Size	12 volt, 7.2 Ah
<b>Management</b>	
Alarms	Visual (LED) and audible alarms
Adjustable Sensitivity and Transfer Voltage	Low, Medium (default), High
Auto-Shutdown Software	PowerChute Personal Edition (via USB interface. USB cable not included)

### APC by Schneider Electric

132 Fairgrounds Rd  
West Kingston, RI 02892

[www.apc.com](http://www.apc.com)

