



KONICA MINOLTA

bizhub

C353/C253/C203

The new bizhub. Changing colour.



Outstanding 31-40ppm
Business Color MFP



The essentials of imaging



Introducing our brand new line.

Today, business is changing faster than ever. Fortunately, Konica Minolta is keeping up. Introducing the new bizhub C353/C253/C203. Featuring bizhub's new signature white line, these high-performance, compact colour machines epitomise Konica Minolta's philosophy of change. They boast a wealth of new features and advances designed to insure that your work place is more collaborative, more productive and more connected. In short, the C353/C253/C203 were built to change the way you do business.

The solutions of

Document Solutions For The Way You Work

Konica Minolta's solutions of i include our extensive lineup of MFPs, printers and software applications designed for you, the individual.

<http://www.solutions-of-i.com>



bizhub 
Change the way you do business.



bizhub C353/C253/C203

CORE ELEMENTS

Communication Technologies

The intelligent technologies of the new bizhub streamline the rapid flow of information and communication within, into and out of your office, allowing you to collaborate more effectively and work smarter.

Design and Engineering

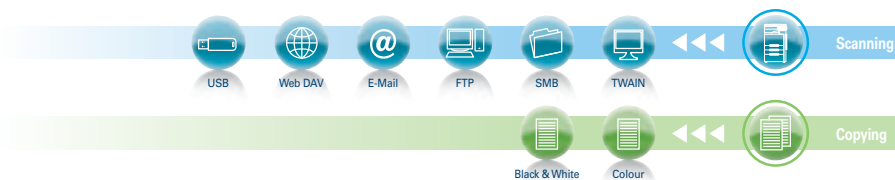
Reengineered inside and out, the new bizhub inspires innovation, improves productivity and fosters creativity. Its signature white line acts as an innate pathway for operational information as well as a striking design element.

Open Platform

The proprietary bizhub OP control system offers an unprecedented level of flexibility and includes the Open API (Application Program Interface), the centralised bizhub Architecture, and the Emperon Print System.

Put your best ideas on

Great ideas are what make great businesses run. But you have to be able to express and communicate those ideas effectively. That's why we created the scalable and flexible C353/C253/C203. Whether you're copying, printing, scanning or faxing—working within the office or across the globe—you can rest assured that bizhub has the cutting-edge technologies necessary to make your ideas stand out. The bizhub also makes storing and archiving information easy.



A variety of ways to communicate and share your ideas.

Our high-speed network scanner and innovative fax features allow you to work efficiently with peers, clients or vendors no matter where they're located. The multiple scan and send modes of the C353/C253/C203 provide you with maximum functionality and flexibility. And, our network fax features give you several cost-effective options to transmit critical data and to streamline fax routines.

Scanning

Scanning features include the ability to simultaneously scan and send data to multiple destinations with a single operation. For instance, you can send data to a shared folder and store the data on the bizhub's hard disk drive, all with just one scan. Our Compact PDF feature is perfect for converting large, colour scans into files that are easier to send and receive.

- Multi-Method Send
- Scan to E-mail
- Scan to FTP
- Scan to Web DAV
- Scan to SMB
- Scan to Box
- Scan to USB memory*
- TWAIN scan
- Compact PDF

*Optional Local Interface Kit EK-603 is required.

Fax*

New fax functions utilise network infrastructure—Internet and intranets—to move information faster and to provide cost reductions. Besides our standard G3 fax, these machines boast Internet, Colour IP and PC fax functions as well as the handy TSI Routing feature.

- G3 fax
- Internet fax
- Colour IP fax
- PC fax
- TSI Routing

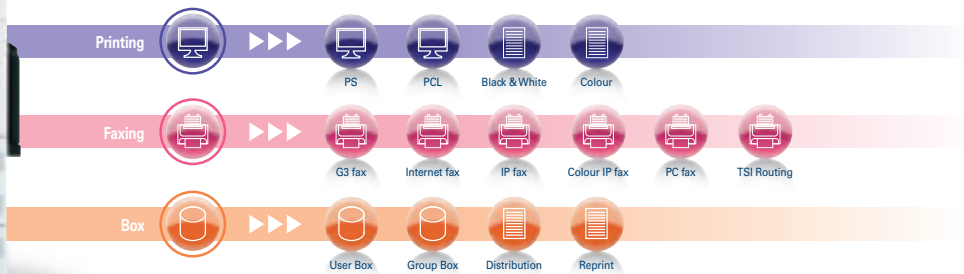
TSI Routing

Use TSI (Transmitting Subscriber Identification) Routing to automatically sort incoming faxes by digitised sender information. Received TSI identified faxes can be routed directly to an established Box folder or an e-mail, FTP or SMB server, and printed at the same time.

*Optional Fax Kit FK-502 and Mount Kit MK-711 are required.



the line.



Store and manage your office's knowledge capital.

The bizhub's Box function allows you to archive, manage and disseminate any information that has been scanned, printed, copied or faxed. This makes tracking down, resending and reprinting this information remarkably fast and easy. With PageScope Box Operator, you can download, access and manage the Box's files from any PC.

- Assign Boxes to individuals, or "Group Boxes" to teams or departments
- Store up to 3,000 documents or 10,000 pages
- Allocate Boxes by theme, project or goal
- Send data from a Box to fax, e-mail, FTP or SMB
- Bates numbering (Annotation function)

Make more of your control panel.

The new optional i-Option* feature promises to expand the possibilities of your bizhub's control panel, allowing you to view, download and print documents more easily and securely.

- Web browser functions enable easy PDF handling
- Customise your control panel with Image Panel function
- PDF encryption function for added security

*Optional UK-201 is required.



Web browser function

Compatible. Scalable. Flexible.

Supported by Windows, Mac, UNIX, Linux and Citrix, the C353/C253/C203 are compatible with almost any office. The new Internet Protocol version 6 (IPv6) allows you to grow with the ability to create even more IP addresses. IPv6 also offers greatly improved security functions.

- Adobe compatibility: PostScript3, PDF 1.5
- HP compatibility: HP PCL 5e/c, HP PCL 6 (XL3.0)
- Network: TCP/IP, NetBEUI, NetWare, AppleTalk
- Interface: 10Base-T, 100Base-T, 1000Base-T, USB 2.0



XPS Support and DPWS

To simplify document handling, bizhub provides seamless connectivity with Windows Vista. It offers native support for the new XML Paper Specification (XPS) file format and the Devices Profile for Web Services (DPWS) protocol featured in Vista.

Improve your bottom line.

The security and management features of the C353/C253/C203 were developed to help you maintain your company's bottom line. bizhub's security functions protect your businesses' valuable and confidential knowledge capital, preventing costly information loss or theft. Our management features assist you in keeping bizhub utilisation costs under control.

Protect your valuable information assets.

The security features of the C353/C253/C203 help prevent unauthorised access, as well as hacking and leaks. These features include data encryption, digital signatures, security log management, a variety of authentication methods including state-of-the-art biometric and IC card authentications, and the ability to allow or restrict access and privileges.

- Built-in Authentication
- External-server Authentication
- Biometric Finger Vein Authentication¹
- IC Card Authentication²
- IP Filtering
- Encrypted PDF
- Copy Protection
- S/MIME
- SSL/TLS Encryption
- HDD Data Encryption³
- HDD Password Lock
- HDD Auto Job Deletion

¹ Optional Authentication Unit AU-101, Local Interface Kit EK-603, Mount Kit MK-711 and Working Table WT-502 are required.

² Optional Authentication Unit AU-201, Local Interface Kit EK-603, Mount Kit MK-711 and Working Table WT-502 are required.

³ Optional Security Kit SC-503 is required.



No need to remember passwords.





Keep track of your office's work habits and manage costs.

Efficient management of users and usage can help your office work more efficiently and save money at the same time. The bizhub's built-in account management function gives you the tools you need to effectively manage copy, print, scan and fax usage for up to 1,000 departments or individuals. For larger, external-server networks, the C353/C253/C203 work with an authentication function based on the LDAP or Active Directory server. To manage colour costs on a daily basis, use our toner and colour-save modes.

- Built-in Account Management
- External Server User Management
- Toner Save Mode
- 2-Colour Mode/Single Colour Mode
- PageScope Software

PageScope Software

Konica Minolta offers a host of software tools that help improve administrators' work efficiency. These include:

- **PageScope Data Administrator**
Used to create and edit user information on the network, to import/export data and to create settings for multiple devices.
- **PageScope Net Care**
A utility software that provides central control over printers, copiers and other devices on a network.
- **PageScope Web Connection**
A web-based network utility, embedded into each device, for managing a single MFP.



Make the most of your valuable time.

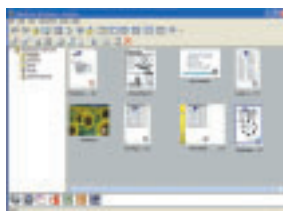
There are only so many hours in a day to accomplish your workload. You need a capable and efficient office tool that can help you tackle your tasks. The new bizhub offers high-speed, high quality output, network printing and a host of other features to insure that your uptime is maximised, your jobs get finished and your time is well spent.

- **C353: 35 ppm colour, 35 ppm black & white**
- **C253: 25 ppm colour, 25 ppm black & white**
- **C203: 20 ppm colour, 20 ppm black & white**
- **Short Warm-Up Time¹**
- **Large-capacity paper supply**
- **Compatibility with a wide range of paper types**
- **100% Duplex Productivity**
- **Sheet-through ADF: 70 opm²**
- **Improved Multi-job ability**
- **PDF Direct Print**
- **USB Direct Print**
- **High-performance Emperon Print System**



PageScope Workware (Optional).

Our PageScope Workware software allows you to easily manage files with different formats by converting them to PDFs. It provides a variety of editing functions, offers thumbnail previews and utilises easy-to-use drag-and-drop operation.



¹ 30 sec. or less in black & white

² A4, 300dpi

Success is just down the line.

We all strive for success. And often, success means maximising productivity. The C353/C253/C203 allow you to do more than you ever thought possible with one machine. They provide a host of advanced and versatile features that deliver increased productivity, limited downtime and professional-looking production results. Whether in black and white or in colour, these MFPs help you get your work done quickly and creatively every time.



Optional Job Separator trays separate print/fax output from copy output.



Give your jobs that professional touch.

The C353/C253/C203 can output ordered documents for assembling professional-looking, presentation-quality booklets in-house. With our optional finishers, you can go even further to create manuals, direct mail pieces, posters, banners or formal proposals without ever having to send materials out to a printer. The optional Fiery Image Controller¹ makes desktop publishing even easier, allowing you to take on more complex graphic design applications.

- Saddle-stitching capability
- Stapling and hole punching
- Cover Sheet/Inter Sheet
- Poster Mode/Banner Printing²
- Fiery Image Controller (Optional)
- Print/Copy Job Confirmation
- Sample Print/Copy before run

Finishing Tasks and Necessary Options

	Finisher FS-519	Finisher FS-609
Stapling	Included	Included
Multi-stapling	Included	Included
Saddle-stitching	Saddle Sticher SD-505	Included
Folding	Saddle Sticher SD-505	Included
Hole punching	Punch Kit PK-515	Punch Kit PK-501



Paper Capacity and Compatibility

- Max. paper supply: 3,650 sheets (80g/m²)
- Multiple bypass tray: 150 sheets
- Max. paper size:
311mm x 457mm (2nd std tray)
297mm x 1,200mm (Multiple bypass tray*)
- Compatible paper weight:
60-256 g/m² (All trays)
64-256 g/m² (Duplex)
60-271 g/m² (Multiple bypass tray)

*When Banner Paper Setting Guide MK-713 is installed.



Print banners up to 1,200mm long.

¹ Not available with C203.

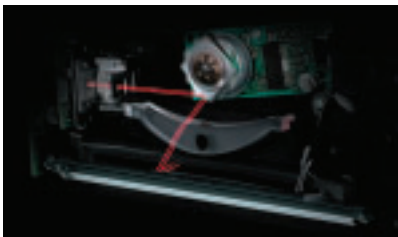
² Optional Banner Paper Setting Guide MK-713 is required.



New technologies make you more productive.

1 Compact Twin-Beam Laser Printhead

Utilising a wide-angle lens and a small-diameter tetrahedral polygon mirror, the bizhub's printhead emits two laser beams simultaneously to increase writing speed and improve image quality.

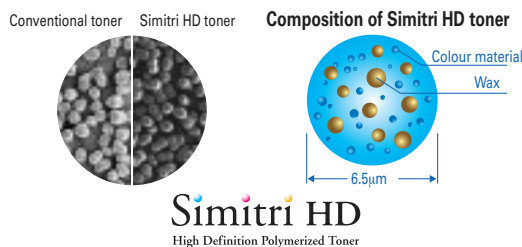


2 New Tandem Engine

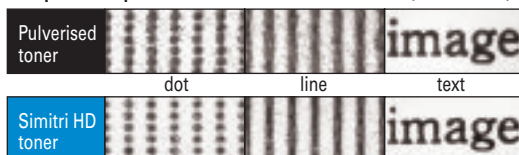
Thanks to the tandem layout of the four CMYK photoconductive drums, the intermediate transfer belt can transfer four colours in just one step. This allows the bizhub to achieve colour output speeds that match those of black and white.

3 Simitri HD Toner

The small size and consistent shape of Simitri HD toner particles ensure sharp reproduction of text as well as uniformity of colour. The toner's low-temperature fixing also helps to reduce electricity consumption.



Comparison of pulverised toner and Simitri HD toner (internal test)



4 100% Duplex Productivity

Achieve fast output when printing or copying double-sided colour pages thanks to an optimum paper path configuration and switch-back timing that alternately feeds two sheets at a time.

5 Image Stabilisation

Periodically, MFPs must take pauses for image stabilisation to ensure consistent image quality. The C353/C253/C203 perform simultaneous processing of multiple stabilisation processes, which markedly reduces these pauses, resulting in one of the industry's shortest downtimes.

6 Belt-type Fixing

The belt-type fixing unit of the C353/C253/C203 enables these machines to blend durability and high speed as never before. Also, the unit's horizontal layout contributes to the bizhubs' small footprint.

7 ADF with Dust Reduction Mode

The ADF of the C353/C253/C203 is equipped with a dust-reduction mode that shifts the scanner glass between jobs to remove excess paper dust. This feature significantly improves the quality of scanned images.





An improved product design helps you work smarter.



Body and Interface Design

The minimalist black and white design ensures that information is easy to find and convenient to access, and that user interfaces are intuitive to use. These user-friendly bizhubs are as at home in a high-designed office as they are in a conventionally designed one.

Colour LCD Control Panel

The user interface of this panel boasts an 800 x 480 pixel, touch-screen display, and the ability to enlarge text. For easier file viewing and selection, the display provides colour previews and thumbnails.

Universal Design

Designed to accommodate anyone regardless of age, gender, body size or disability, these bizhubs feature front access to toner and paper, easy-grip paper trays and a vertically and horizontally tilting control panel.



Status LED Lights

The bizhub's signature white line contains LEDs that follow the flow of input and output, informing you of message transmission/reception, device operating status, maintenance alerts and more.



Thumbnail Screen



Print Preview Screen



Specifications

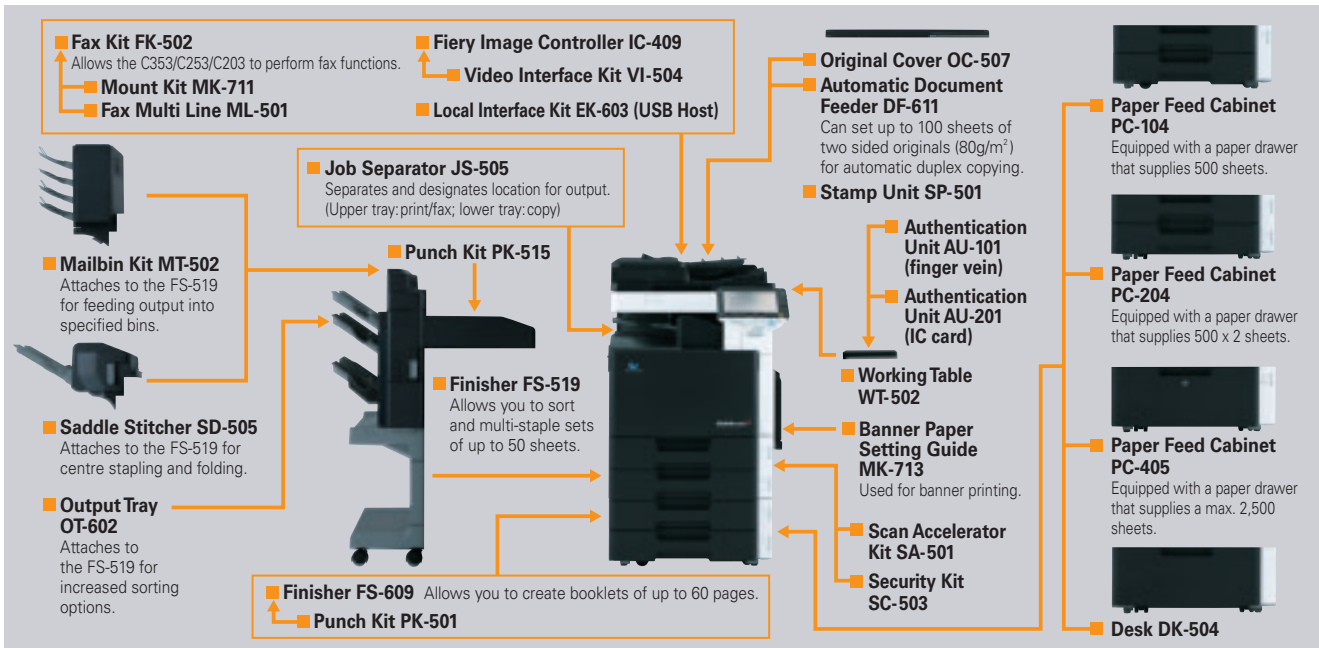
bizhub C353/C253/C203

Type	Desktop Full-Colour Copier/Printer/Scanner	
Colour Support	Full-Colour	
Copy Resolution	Scan	600dpi x 600dpi
	Print	1,800dpi equivalent x 600dpi
Gradation	256	
Memory Capacity (Std/Max)	1.024MB/1.024MB	
HDD	60GB (Standard)	
Original Type	Sheets, Books, 3-D Objects (Max. 2.0kg)	
Max. Paper Size	A3	
Max. Original Size	A3 Wide (12 1/4" x 18")	
Output Size	A3-A5, 96 Lengthwise, A3 Wide (311 x 457mm), A6 Lengthwise Thick Paper, Long Length Paper (210 x 433 - 297 x 1,200mm)	
Image Loss	Max. 4.2mm for top edge, Max. 3mm for bottom/right/left edges	
Warm-Up Time (Time from when sub-power is turned on)	Colour	C353: 41 sec. or less C253, C203: 37 sec. or less
	B/W	C353: 30 sec. or less C253, C203: 27 sec. or less
First Copy Time (23°C, std. voltage)	Colour	C353: 8.5 sec. or less C253, C203: 11.7 sec. or less
	B/W	C353: 5.9 sec. or less C253, C203: 7.7 sec. or less
Copy Speed (A4 Crosswise)	Colour	C353: 35 pages/min C253: 25 pages/min C203: 20 pages/min
	B/W	C353: 35 pages/min C253: 25 pages/min C203: 20 pages/min
Copy Magnification	Fixed Same Magnification	1:1±0.5% or less
	Scaling Up	1:1.154/1.224/1.414/2.000
	Scaling Down	1:0.866/0.816/0.707/0.500
	Preset	3 types
	Zoom	25-400% (in 0.1% increments)
Paper Capacity (80g/m ² paper)	Standard	500 sheets (1st/2nd Tray), 150 sheets (Multiple Bypass Tray)
	Optional	500 sheets (PC-104), 1,000 sheets (PC-204), 2,500 sheets (PC-405)
Paper Weight	Universal Cassette	60-256g/m ² *
	Multiple Bypass Tray	60-271g/m ² *
Multiple Copy	1-999 sheets	
Power Requirements	AC220-240V 8A (50/60Hz)	
Max. Power Consumption	1.5kW or less	
Dimensions [W] x [D] x [H]	643mm x 852mm x 770mm (25-1/4" x 33-1/2" x 30-1/4")	
Weight	Approx. 99kg (218lb)	
Space Requirements [W] x [D]	991mm x 852mm (39" x 33-1/2") *Multiple Bypass Tray opened	

Controller

Type	Internal Type	
CPU	MC747A 1GHz	
Memory	1.024MB (Shared with copier)	
Print Speed	Same as Copy Speed (when using the same original)	
HDD	60GB (Shared with copier)	
Print Resolution	1,800dpi equivalent x 600dpi	
PDL	PCL6/Emulation, PCL XL ver.2.1 Emulation, PostScript3 Emulation (3016)	
Protocol	TCP/IP, IPv6, NFS supported, SMB (net BEUI, LFD, IPP1), SNMP, HTTP, EtherTalk	
Support OS	Server	Windows NT4.0 SP6/2000/2003 Server/2003 Server x64 Edition
	Client	Windows 2000/XP/Vista/NT4.0 SP6/Vista x64 Edition/MacOS X ver. 10.2 or later/Mac Intel OS X 10.4 or later/Red Hat Enterprise Linux
Font	PCL	80 fonts
	PS	137 fonts
	Optional	
Interface	Standard	Ethernet (10BASE-T/100BASE-TX/1000BASE-T), USB1.1/2.0
	Optional	USB Host/USB1.1/2.0

System Options



Product appearance, configuration and/or specifications are subject to change without notice.

The Konica Minolta logo and the symbol mark, and "The essentials of imaging" are registered trademarks or trademarks of Konica Minolta Holdings, Inc.

bizhub, PageScope, Simitri and the Emperon logo are registered trademarks or trademarks of KONICA MINOLTA BUSINESS TECHNOLOGIES, INC.

Windows is a registered trademark of Microsoft Corporation in the United States and other countries.

Adobe and PostScript are registered trademarks or trademarks of Adobe Systems Incorporated.

All other brand and product names are registered trademarks or trademarks of their respective owners.

Konica Minolta copiers and multi-functional peripherals are designed with the environment in mind.



- Have Earned ENERGY STAR for Energy Efficiency
- The Use of Recycled Materials
- Production at ISO-Certified Factories

These products have earned the ENERGY STAR for energy efficiency. ENERGY STAR is a U.S. registered mark.

ISO15408 (EAL Level 3) Certification



These products comply with the security requirements of ISO15408 (EAL Level 3).

* The ISO 15408 certification applies only to IT security capabilities. This certification is NOT a product guarantee.

Requirements for safe use

- Please read and follow the instruction manual to ensure safe operation.
- Only operate using appropriate power supply and voltage.
- Connecting the earth wire to an inappropriate place may cause explosion or electric shock. Please connect accordingly (Taiwan and the Philippines only).

Scanning Function

Type	Full-Colour Scanner	
Scanning Size	Max. A3	
Scanning Resolution	Push	200/300/400/600dpi
	Pull	100/200/300/400/600dpi
Scanning Speed (A4 Crosswise)	Colour / B/W	55/50 pages/min (600dpi), 70/70 pages/min (300dpi)
Main Functions	Scan to E-Mail, Scan to HDD/Box, Scan to FTP, Scan to PC(SMB)/USB memory *Network TWAIN (via Ethernet/TCP/IP), TWAIN RealTime Mode (Push/Pull), HDD TWAIN	
Interface	Ethernet (10BASE-T/100BASE-TX/1000BASE-T)	
Protocol	TCP/IP, FTP, SMB, SMTP	
Support OS	Windows NT4.0 SP6/2000/XP/Vista, Mac OS X 10.4 or later	
Output Format	TIFF, PDF, Compact PDF, XPS, JPEG	
Driver	TWAIN Driver, HDD TWAIN Driver	

Internet Fax Function

Protocol	Transmission: SMTP Reception: POP3, TCP/IP
Connection Mode	Full-Mode
Sending Paper Size	Max. A3 (16-1/2" x 11-3/4")
Receiving Print Size	Max. A3 (Long Length Support: Max.1,000mm(39-1/4"))
Interface	Ethernet (10BASE-T/100BASE-TX/1000BASE-T)
Resolution	200x100dpi, 200x200dpi, 400x400dpi, 600x600dpi
Data Format	TIFF-F/S/TIFF-F

Optional Fax Function

Communication	Super G3
Compatible Lines	PSTN, PBX/NCC, Fax Line (G3)
Line Density	G3: 8x3.85, 8x7.7, 8x15.4, 16x15.4 line/mm 200x100dpi, 200x200dpi, 400x400dpi, 600x600dpi
Modem Speed	2.4kbps-33.6kbps
Compression	MH/MR/MMR/JBIG
Sending Paper Size	Max. A3 (Long Length Max. 1,000mm)
Recording Paper Size	Max. A3 (Long Length Record Max. 1,000mm - following the page division)
Transmission Speed	Less than 3 sec. (V.34, JBIG)
Scan Speed	1.0 sec. (A4 (detailed mode))
Memory	1,024MB
Number of Abbr. Dials	2,000
Number of Program Dials	400
Number of Group Dials	100
Sequential Multiple Station Transmission	Max. 600

Optional Fiery Image Controller IC-409*

Type	Internal Type	
CPU	Intel Celeron D 2.8GHz/533MHz	
Memory	512MB (Max.512MB)	
HDD	80GB	
Print Speed	Same as Copy Speed (when using the same original)	
Resolution	1,800dpi equivalent (main) x 600dpi	
PDL	Adobe PostScript3 ver.3017, PCL6 ver. XL3.1	
Protocol	TCP/IP, IPP/SPX, SMB, Port9100 (Bi-Directional), IPP, SNMP, LDAP, HTTP/HTTPS, AppleTalk	
Support OS	Windows 2000/XP/Vista (Available soon), Windows Server 2003 or later, Mac OS X 10.3.9/10.4 or later, Unix/Linux	
Font	PCL	80 fonts
	PS	136 fonts
Interface	Ethernet (10BASE-T/100BASE-TX/1000BASE-T)	

* Not available with C203.

KONICA MINOLTA BUSINESS TECHNOLOGIES, INC.

1-6-1 Marunouchi Chiyoda-ku, Tokyo, Japan
http://www.biz.konicaminolta.com

PRINTED WITH SOY INK This catalogue was printed using soy ink.